

TUES-NEWS

#WEARESCHSL

SEPTEMBER 21, 2021

WWW.SCHSL.ORG

FALL LIVING CLEAN WEEK

Please be sure to make us aware of your community clean up initiatives with your student athletes during Fall Living Clean Week, Sept 20-25.

Remind all of your sports teams that our goal is an ejection free week in all sports.



Goodbye
SUMMER
hello
AUTUMN

SCHSL FALL '21 LIVING CLEAN EJECTION FREE ~ LITTER FREE

September 20-25, 2021

WWW.SCHSL.ORG

#WeAreSCHSL

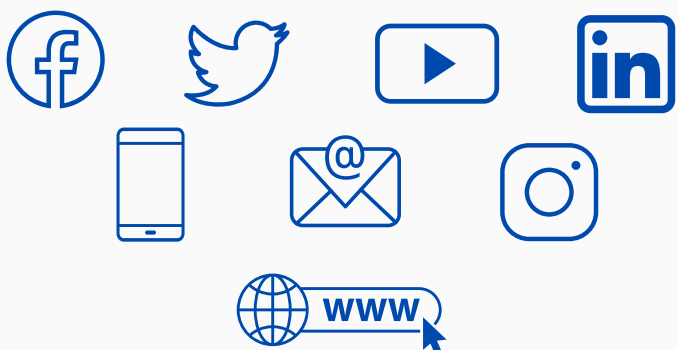


21-22 SWIM FINALS

Make a Splash. SCHSL

October 9 & 11, 2021

#WEARESCHSL



- MARK CALENDARS -

September 20-25
LIVING CLEAN WEEK

September 21
Class AA Meeting @ 9:00 a.m.

September 22
Class AAAA Meeting @ 9:00 a.m.
First Day of FALL

October 9, 11
Swim Championships @ North Charleston Aquatic Center

*Next scheduled Executive Committee meeting - November 1

The **SCHSL Middle School Task Force** is looking for a **DISTRICT 7** representative for the 2021-22 school year.

This includes the following counties:

Allendale, Bamberg, Barnwell, Calhoun, and Hampton.

If you are interested please email Amy Boozer (amy@schsl.org)



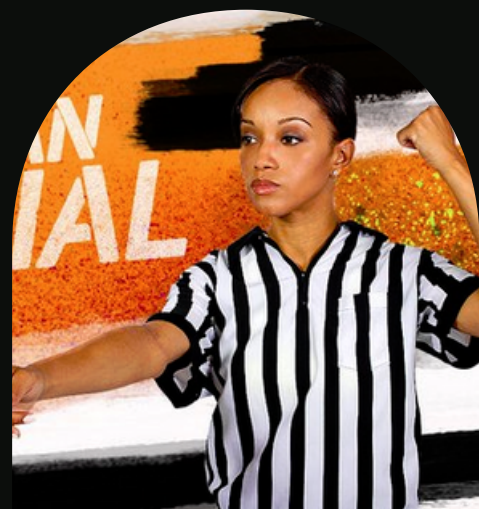
**2020-21 IMPACT REPORT
is Here!**

DISCOVER



**SC Farm Bureau's
"Chain Crew of the Week"**

NOMINATE



#BecomeAnOfficial

APPLY



"WHY AM I NOT RECEIVING SCHSL EMAILS???"
BECAUSE YOU HAVE NOT REGISTERED.
CLICK GRAPHIC ABOVE.
QUESTIONS? CONTACT KEITH@SCHSL.ORG

ATTN Athletic Directors and Coaches

Arbiter Game Notes - Please make sure that you have your game notes entered in arbiter for each home game. These notes instruct officials on any special instructions about your home game information that they need to know. This can include but is not limited to: where to park, the location of their locker room, physical address of their changing facilities, etc. jan@schsl.org

Chain Crews - The home team must have a chain crew for their games. We understand with COVID that the persons you have to run the crew may change each week. Please make sure that the members of the chain crew are adults. charlie@schsl.org

PLAYOFF INFO - Please submit how your region will qualify teams for the playoffs if all teams cannot play a full region schedule. This needs to cover all Fall sports and must be turned in prior to any region games being played. Please send this to Kayla at kayla@schsl.org

TEAMFUNDER.COM

A BETTER WAY TO FUNDRAISE

RAISE MONEY WITH PRODUCTS YOUR FANS CRAVE

YOUR LOGO HERE

BENEFITS:

- ✔ No minimum orders
- ✔ No cost or start-up fees
- ✔ Less work on coaches, players, & parents

DISCOVER A BETTER WAY >>